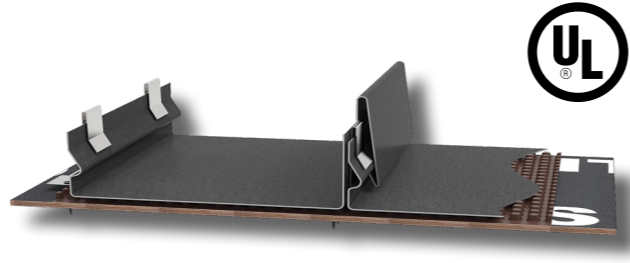


스냅락 시스템 SNAP LOCK³⁹

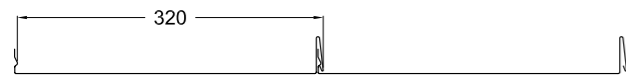
적용 : 지붕, 외장



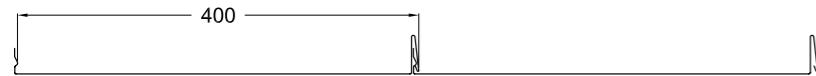
스냅락 시스템은 실용신안등록된 제품으로 이음부 처리의 공정이 필요한 기존 돌출이음 공법을 획기적으로 변화시킨 시스템입니다. 판재를 서로 끼워서 결합하는 방식의 스냅락 시스템은 공정을 최대한 줄여 공기단축과 최고의 시공성을 자랑하며, 기존의 돌출이음보다 높고 좁은 이음부는 강렬한 라인을 형성하여 단정하고 간결한 외관의 디자인을 가능케 합니다. 스냅락 시스템은 심미적이고 기품있는 건축물의 디자인을 완성하기에 적합합니다.

스냅락 시스템 노출폭 (원자재 /가공 후 폭)

스냅락 420폭_최소폭 (WIDTH: 420mm / 320mm)

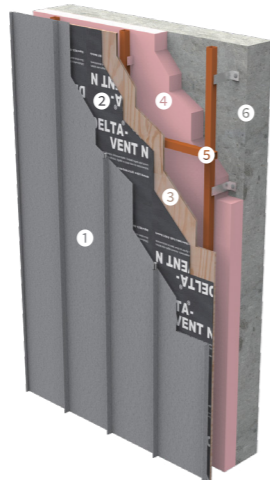


스냅락 500폭 (WIDTH: 500mm / 400mm)

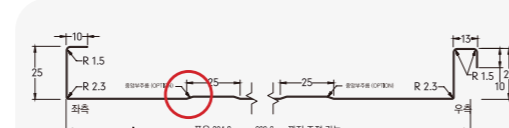


스냅락 시스템 3D 전개도

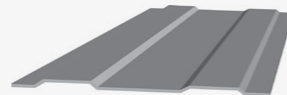
- ① 금속마감재
- ② 투습방수지 (DELTA VENT N)
- ③ 내수합판
- ④ EPS 단열재
- ⑤ 각파이프
- ⑥ 콘크리트



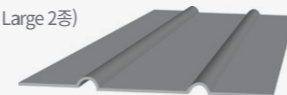
스냅락 시스템 주름 옵션



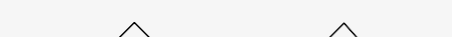
BEAD RIBS



PENCIL RIBS (Small, Large 2종)

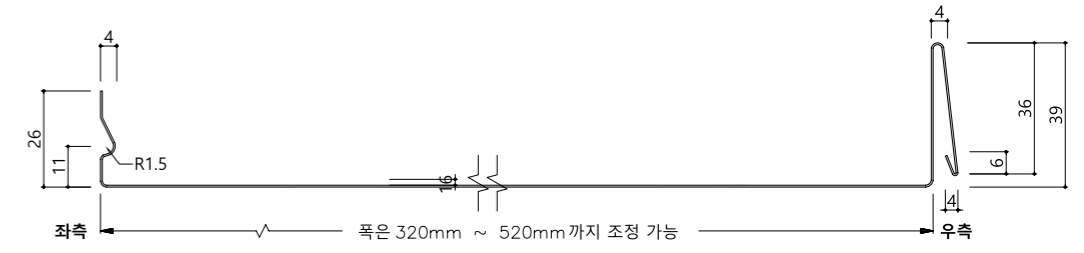


V-RIBS (Small, Large 2종)

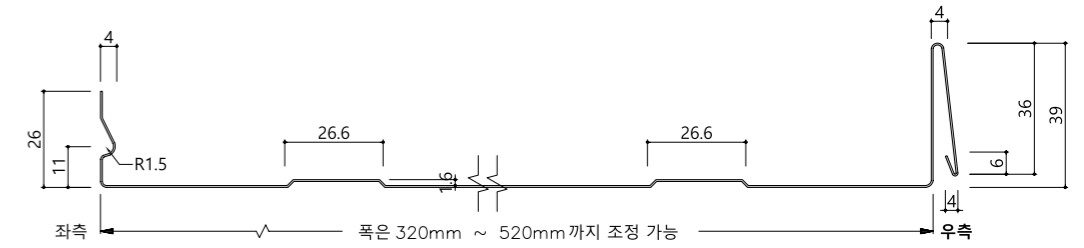


스냅락 시스템 비드 상세도 (양쪽주름형)

BEAD 없음



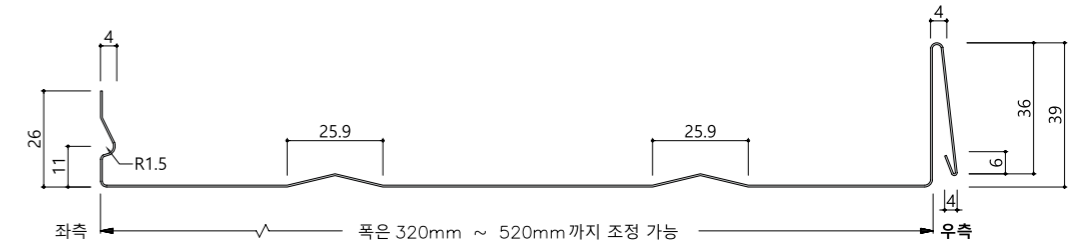
BEAD RIBS



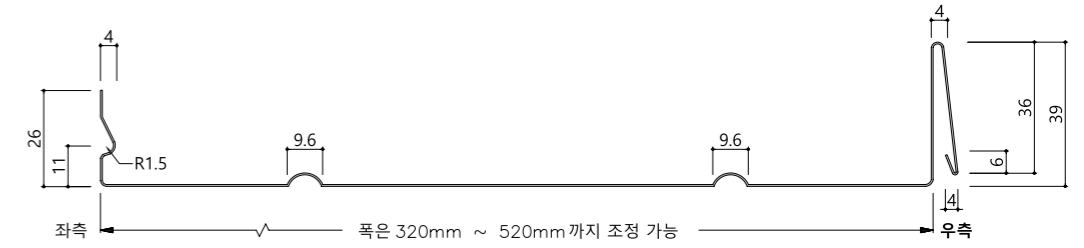
PENCIL RIBS
- Large



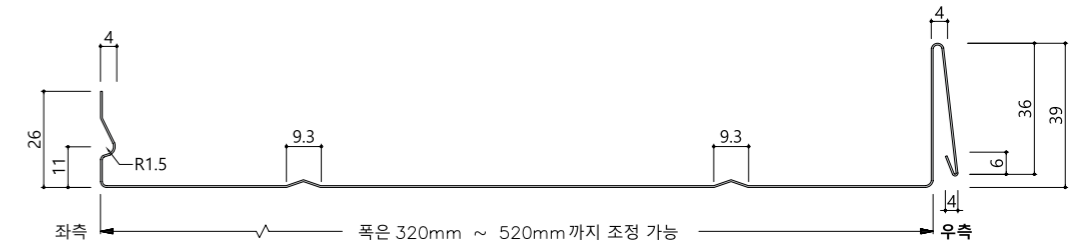
V-RIBS
- Large



PENCIL RIBS
- Small

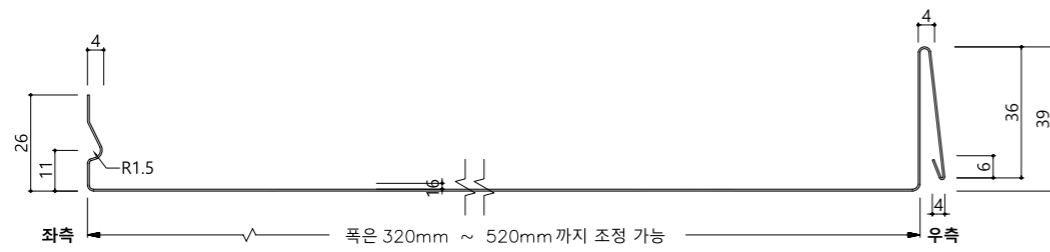


V-RIBS
- Small

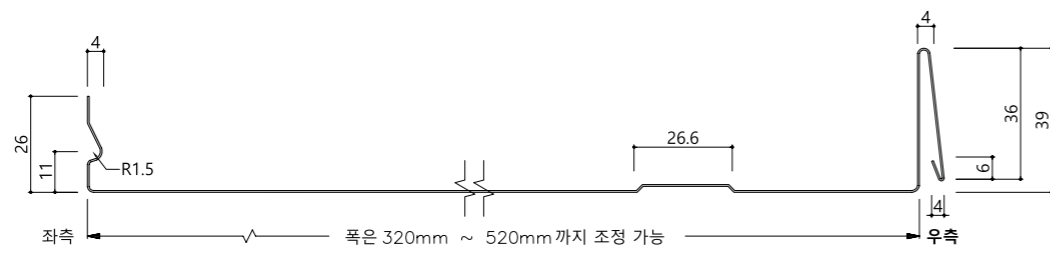


스냅락 시스템 비드 상세도 (한쪽주름형)

BEAD 없음



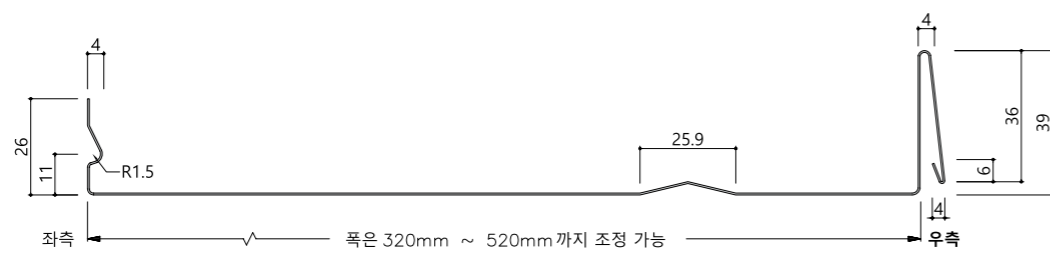
BEAD RIBS



PENCIL RIBS
- Large



V-RIBS
- Large



PENCIL RIBS
- Small



V-RIBS
- Small

